

Outer ring:

Bearing steel, ground,

d = 0.1900 in: without lubrication groove and hole

Inner ring:

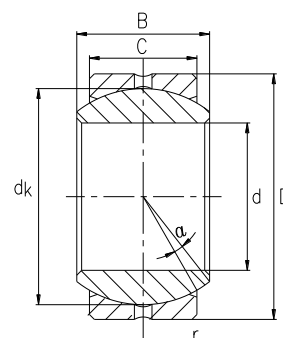
Bearing steel, hardened, ground, polished, chrome plated

Sliding contact surface:

Steel/steel, requiring maintenance

外圈: 轴承钢, 磨加工, d = 4.826: 无油槽, 无油孔

内圈: 轴承钢, 淬火, 磨加工, 抛光, 镀硬铬



Bearing No.		Dimensions in inches						Load ratings	Weight
型号		尺寸 inch						负荷	重量
	d	D	C	B	dk	r	α	stat.	
	+0.015	+0.000	±0.005	±0.005				C ₀ (Lbf)	≈Lbs
	-0.005	-0.007							
COM 3	.1900	.5625	.218	.281	.406	.015	11	3,250	.014
COM 4	.2500	.6562	.250	.343	.500	.022	13.5	4,950	.022
COM 5	.3125	.7500	.281	.375	.562	.032	12	6,475	.03
COM 6	.3750	.8125	.312	.406	.656	.032	10	8,400	.038
COM 7	.4375	.9062	.343	.437	.687	.032	8	9,453	.047
COM 8	.5000	1.0000	.390	.500	.813	.032	9.5	13,250	.065
COM 9	.5625	1.0937	.437	.562	.906	.032	9.5	16,630	.086
COM 10	.6250	1.1875	.500	.625	1.000	.032	8.5	21,280	.11
COM 12	.7500	1.4375	.593	.750	1.187	.044	9	31,920	.204
COM 14	.8750	1.5625	.703	.875	1.312	.044	9.5	41,960	.263
COM 16	1.0000	1.7500	.797	1.000	1.500	.044	10	55,200	.386

Bearing No.		Dimensions in millimeters						Load ratings	Weight
型号		尺寸 mm						负荷	重量
	d	D	C	B	dk	r	α	stat.	
	+0.038	+0.000	±13	±13				C ₀ (KN)	≈kg
	-0.013	-0.018							
COM 3	4.826	14.288	5.54	7.14	10.31	.38	11	14.5	.006
COM 4	6.350	16.667	6.35	9.71	12.70	.56	13.5	22.0	.01
COM 5	7.938	19.050	7.14	9.53	14.27	.81	12	28.8	.014
COM 6	9.525	20.638	7.92	10.31	16.66	.81	10	37.4	.017
COM 7	11.113	23.017	8.71	11.10	17.45	.81	8	42.0	.021
COM 8	12.700	25.400	9.91	12.70	20.65	.81	9.5	58.9	.029
COM 9	14.288	27.780	11.10	14.27	23.01	.81	9.5	74.0	.039
COM 10	15.875	30.163	12.70	15.88	25.40	.81	8.5	94.7	.05
COM 12	19.050	36.513	15.06	19.05	30.15	1.12	9	142.0	.093
COM 14	22.225	39.688	17.86	22.23	33.32	1.12	9.5	186.6	.119
COM 16	25.400	44.450	20.24	25.40	38.10	1.12	10	245.5	.175

