

Housing:

Free-cutting or forged carbon steel, Zinc plated

Bearings: mounted with GE..E(S)

Greasing:

d ≥ 15: fitted with hydraulic grease nipples

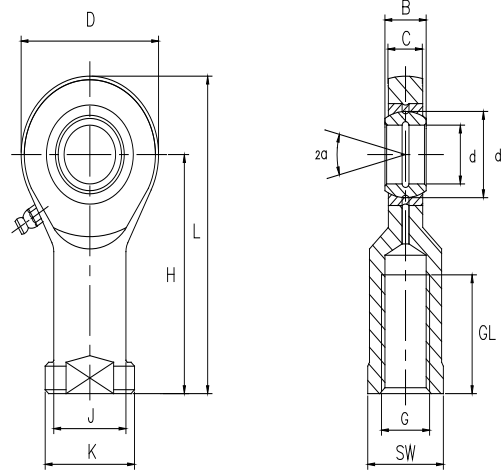
Sliding contact surface:

Steel/steel, requiring maintenance

杆端体: 碳钢, 车制件或精锻件, 镀白锌

轴承: 装配 GE..E(S) 轴承

渗油: d ≥ 15: 带油嘴



Bearing No. 型号	Dimensions millimeters 尺寸 mm											Load ratings 负荷		Weight 重量		
	d	B	C	D	H	L	K	J	dk	SW	G	GL	α		dyn. C (KN)	stat. C ₀ (KN)
SI 5 E	5	6	4.5	21	30	40	13	10	10	11	M5	11	13	3.4	8.1	0.021
SI 6 E	6	6	4.5	21	30	40	13	10	10	11	M6	11	13	3.4	8.1	0.021
SI 8 E	8	8	6.5	24	36	48	16	12.5	13	14	M8	15	15	5.5	12.9	0.038
SI 10 E	10	9	7.5	28	43	57	19	15	16	17	M10	20	12	8.1	17.6	0.06
SI 12 E	12	10	8.5	34	50	67	22	17.5	18	19	M12	22	11	10.8	24.5	0.096
SI 15 ES	15	12	10.5	40	61	81	26	21	22	22	M14	29	8	17	36	0.18
SI 17 ES	17	14	11.5	46	67	90	30	24	25	27	M16	33	10	21.2	45	0.22
SI 20 ES	20	16	13.5	53	77	104	35	27.5	29	32	M20x1.5	38	9	30	60	0.35
SI 25 ES	25	20	18	64	94	126	42	33.5	35.5	36	M24x2	48	7	48	83	0.64
SI 30 ES	30	22	20	73	110	147	50	40	40.7	41	M30x2	56	6	62	110	0.93
SI 35 ES	35	25	22	82	125	166	58	47	47	50	M36x3	60	6	80	146	1.3
SI 40 ES	40	28	24	92	142	188	65	52	53	55	M39x3	65	7	100	180	2
SI 45 ES	45	32	28	102	145	196	70	58	60	60	M42x3	65	7	127	240	2.7
SI 50 ES	50	35	31	112	160	216	75	62	66	65	M45x3	68	6	156	290	3.6
SI 60 ES	60	44	39	135	175	243	88	70	80	75	M52x3	70	6	245	450	5.6
SI 70 ES	70	49	43	160	200	280	98	80	92	85	M56x4	80	6	315	610	8.6
SI 80 ES	80	55	48	180	230	320	110	95	105	100	M64x4	85	6	400	750	13

Female thread: for a left hand thread, add L (example: SIL..E(S))

内螺纹: 对左螺纹, 加 L (例如: SIL..E(S))