

**Housing:**

Free-cutting or forged carbon steel, Zinc plated, liner with PTFE

**Inner ring:**

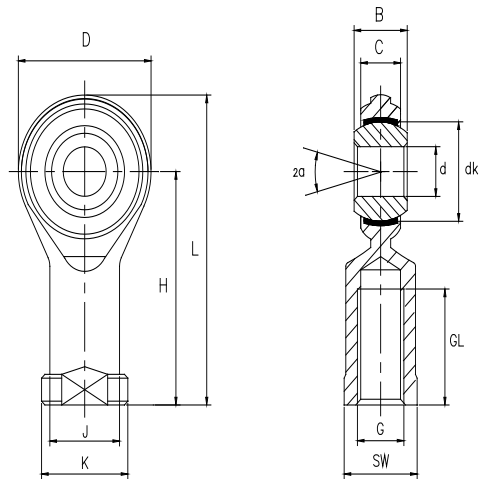
Bearing steel, hardened, ground, polished, chrome plated

**Sliding contact surface:**

Steel/PTFE, maintenance free

**杆端体:** 碳钢, 车制件或精锻件, 镀白锌, 衬有PTFE自润滑材料

**内圈:** 轴承钢, 淬火, 磨加工, 抛光, 镀铬



Bearing No.		Dimensions millimeters											Load ratings		Weight	
型号		尺寸 mm											负荷		重量	
	d	B	C	D	H	L	K	J	dk	SW	G	GL	α	dyn.	stat.	
											6H	min		C (KN)	C <sub>0</sub> (KN)	≈kg
GI 5 TK	5	8	6	19	27	36	11	9	11.1	9	M5	10	12	5.7	6	0.018
GI 6 TK	6	9	6.75	21	30	40	14	10	12.7	11	M6	12	11	7.2	7.7	0.026
GI 8 TK	8	12	9	25	36	48	17	12.5	15.8	14	M8	16	12	11.6	12.9	0.047
GI 10 TK	10	14	10.5	29	43	57	19	15	19	17	M10	20	12	14.5	18	0.077
GI 12 TK	12	16	12	33	50	66	22	17.5	22.2	19	M12	22	13	17	24	0.1
GI 14 TK	14	19	13.5	37	57	75	25	20	25.4	22	M14	25	14	24	31	0.16
GI 16 TK	16	21	15	43	64	85	27	22	28.5	22	M16	28	14	28.5	39	0.22
GI 18 TK	18	23	16.5	44	71	93	31	25	31.7	27	M18×1.5	32	15	38	47.5	0.32
GI 20 TK	20	25	18	50	77	102	34	27.5	34.9	30	M20×1.5	33	14	42.5	57	0.42

Female thread: for a left hand thread, add L (example: GIL..D)

内螺纹:对左螺纹, 加 L (例如: GIL..D)