

Housing:

Free-cutting or forged carbon steel, Zinc plated, liner with PTFE

Inner ring:

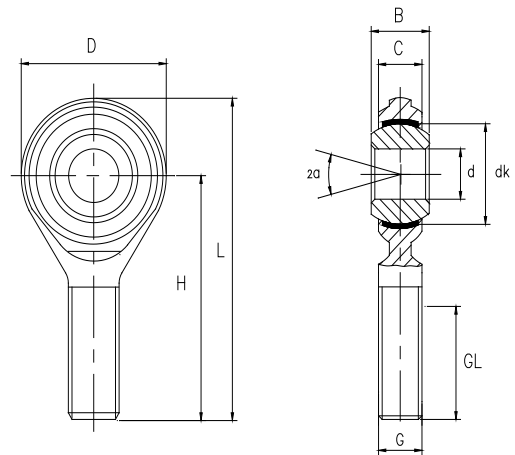
Bearing steel, hardened, ground, polished, chrome plated

Sliding contact surface:

Steel/PTFE, maintenance free

杆端体: 碳钢, 车制件或精锻件, 镀白锌, 衬有PTFE自润滑材料

内圈: 轴承钢, 淬火, 磨加工, 抛光, 镀铬



Bearing No. 型号	Dimensions millimeters 尺寸 mm										Load ratings 负荷		Weight 重量
	d	B	C	D	H	L	dk	G	GL	α	dyn. C (KN)	stat. C ₀ (KN)	
								6g	min				≈kg
GA 5 TK	5	8	6	19	33	42.5	11.1	M5	20	12	5.7	4.3	0.014
GA 6 TK	6	9	6.75	21	36	46.5	12.7	M6	22	11	7.2	6	0.02
GA 8 TK	8	12	9	25	42	54.5	15.8	M8	25	12	11.6	11	0.038
GA 10 TK	10	14	10.5	29	48	62.5	19	M10	29	12	14.5	17	0.055
GA 12 TK	12	16	12	33	54	70.5	22.2	M12	33	13	17	21	0.085
GA 14 TK	14	19	13.5	37	60	78.5	25.4	M14	38	14	24	26	0.14
GA 16 TK	16	21	15	43	66	87.5	28.5	M16	40	14	28.5	32	0.21
GA 18 TK	18	23	16.5	44	72	94	31.7	M18×1.5	44	15	26	38.5	0.28
GA 20 TK	20	25	18	50	78	103	34.9	M20×1.5	47	14	31.5	44	0.38

Male thread: for a left hand thread, add L (example: GAL..D)

外螺纹: 对左螺纹, 加 L (例如: GAL..D)