

Outer ring:

Bearing steel with sliding material of PTFE

Inner ring:

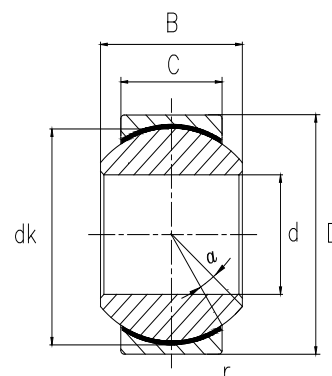
Bearing steel, hardened, ground, polished, chrome plated

Sliding contact surface:

Steel/PTFE, maintenance free

外圈: 轴承钢, 衬有 PTFE 自润滑材料

内圈: 轴承钢, 淬火, 磨加工, 抛光, 镀硬铬



Bearing No.	Dimensions in millimeters							Load ratings		Weight	
型号	尺寸 mm							负荷		重量	
	d	D	B	C	dk	r	α	dyn.	stat.		
								C (KN)	C ₀ (KN)	≈kg	
GE 4 PW	4	+0.012	12 -0.011	7 -0.12	5.25 -0.24	9.53	0.3	13	5.7	9.5	0.004
GE 5 PW	5	+0.012	13 -0.011	8 -0.12	6 -0.24	11.1	0.3	13	7.5	12.5	0.006
GE 6 PW	6	+0.012	16 -0.011	9 -0.12	6.75 -0.24	12.7	0.3	13	9.3	15.5	0.008
GE 8 PW	8	+0.015	19 -0.013	12 -0.12	9 -0.24	15.8	0.3	13	16.7	27.8	0.015
GE 10 PW	10	+0.015	22 -0.013	14 -0.12	10.5 -0.24	19	0.3	13	23.4	39	0.023
GE 12 PW	12	+0.018	26 -0.013	16 -0.12	12 -0.24	22.2	0.3	13	32	53.5	0.035
GE 14 PW	14	+0.018	28 -0.013	19 -0.12	13.5 -0.24	25.4	0.3	15	42	70	0.052
GE 16 PW	16	+0.018	32 -0.016	21 -0.12	15 -0.24	28.5	0.3	15	52.5	88	0.072
GE 18 PW	18	+0.018	35 -0.016	23 -0.12	16.5 -0.24	31.7	0.3	15	64	106.5	0.1
GE 20 PW	20	+0.021	40 -0.016	25 -0.12	18 -0.24	34.9	0.6	15	78	130	0.13
GE 22 PW	22	+0.021	42 -0.016	28 -0.12	20 -0.24	38.1	0.6	15	97	162	0.16
GE 25 PW	25	+0.021	47 -0.016	31 -0.12	22 -0.24	42.8	0.6	15	122	204	0.22
GE 30 PW	30	+0.021	55 -0.019	37 -0.12	25 -0.3	50.8	1.0	15	168	281	0.35
GE 35 PW	35	+0.025	62 -0.019	43 -0.12	28 -0.3	57.1	1.0	16	206	343	0.51
GE 40 PW	40	+0.025	72 -0.019	49 -0.15	35 -0.4	66.6	1.0	17	286	495	0.83
GE 50 PW	50	+0.025	90 -0.022	60 -0.2	45 -0.4	82.5	1.0	12	485	800	1.64