

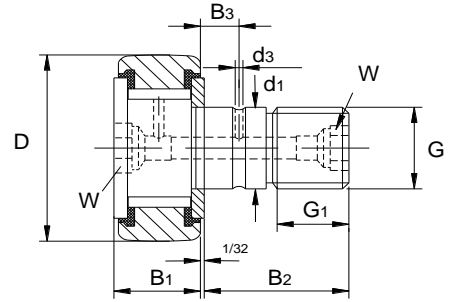
Stud:

Alloy steel, hardened, ground, $d1 \geq .375$ with grease hole

Ring:

Bearing steel, hardened, ground, polished,
Full complement needle roller,
with plastic axial plain washers on both sides

螺栓: 合金钢, 淬火, 磨加工, $d1 \geq .375$ 有油孔
外圈: 轴承钢, 淬火, 磨加工, 抛光, 满滚针配置,
两侧塑料推力滑动垫圈



Bearing No. 型号	Dimensions inches 尺寸 inch										Properties 性能					Weight 重量
	D	d1	B1	B2	B3	d3	G	G1	W	MA	C	Co	Cp	NDG		
	+0.000 -0.001	+0.001 -0.000	+0.000 -0.005				Thread UNF-2A			Lbf	Lbf	Lbf	Lbf	rpm	Boss Min. Dia.	Lbs
CF 1/2 S	.5000	.1900	.375	.625			10-32	.250	1/8	7.5	770	1,100	310	5,000	.29	.023
CF 9/16 S	.5625	.1900	.375	.625			10-32	.250	1/8	7.5	770	1,100	310	5,000	.29	.031
CF 5/8 S	.6250	.2500	.438	.750			1/4-28	.313	1/8	20	1,060	1,700	610	5,000	.36	.048
CF 11/16 S	.6875	.2500	.438	.750			1/4-28	.313	1/8	20	1,060	1,700	610	5,000	.36	.051
CF 3/4 S	.7500	.3750	.500	.875	.250	.093	3/8-24	.375	3/16	55	1,800	3,100	1,840	5,000	.50	.076
CF 7/8 S	.8750	.3750	.500	.875	.250	.093	3/8-24	.375	3/16	55	1,800	3,100	1,840	5,000	.50	.100
CF 1 S	1.0000	.4375	.625	1.000	.250	.093	7/16-20	.500	1/4	150	2,300	4,800	2,390	4,500	.64	.160
CF 1 1/8 S	1.1250	.4375	.625	1.000	.250	.093	7/16-20	.500	1/4	150	2,300	4,800	2,390	4,500	.64	.190
CF 1 1/4 S	1.2500	.5000	.750	1.250	.312	.093	1/2-20	.625	1/4	200	4,200	6,600	3,000	3,900	.76	.290
CF 1 3/8	1.3750	.5000	.750	1.250	.312	.093	1/2-20	.625	1/4	200	4,200	6,600	3,000	3,900	.76	.340
CF 1 1/2 S	1.5000	.6250	.875	1.500	.375	.093	5/8-18	.750	5/16	390	5,000	8,800	5,100	3,100	.89	.510
CF 1 5/8 S	1.6250	.6250	.875	1.500	.375	.093	5/8-18	.750	5/16	390	5,000	8,800	5,100	3,100	.89	.610
CF 1 3/4 S	1.7500	.7500	1.000	1.750	.437	.125	3/4-16	.875	5/16	750	6,400	12,400	7,800	2,600	1.05	.830
CF 1 7/8 S	1.8750	.7500	1.000	1.750	.437	.125	3/4-16	.875	5/16	750	6,400	12,400	7,800	2,600	1.05	.920
CF 2 S	2.0000	.8750	1.250	2.000	.500	.125	7/8-14	1.000	7/16	900	9,600	16,700	10,000	2,200	1.20	1.320
CF 2 1/4 S	2.2500	.8750	1.250	2.000	.500	.125	7/8-14	1.000	7/16	900	9,600	16,700	10,000	2,200	1.20	1.610
CF 2 1/2 S	2.5000	1.0000	1.500	2.250	.562	.125	1-14	1.125	1/2	1,300	12,800	25,400	12,500	2,000	1.31	2.480
CF 2 3/4 S	2.7500	1.0000	1.500	2.250	.562	.125	1-14	1.125	1/2	1,300	12,800	25,400	12,500	2,000	1.31	2.830
CF 3 S	3.0000	1.2500	1.750	2.500	.625	.187	1 1/4-12	1.250	5/8	2,000	17,000	40,000	21,000	1,600	2.00	4.040
CF 3 1/4 S	3.2500	1.2500	1.750	2.500	.625	.187	1 1/4-12	1.250	5/8	2,000	17,000	40,000	21,000	1,600	2.00	4.750
CF 3 1/2 S	3.5000	1.3750	2.000	2.750	.687	.187	1 3/8-12	1.375	5/8	2,500	24,300	54,600	24,750	1,400	2.39	6.220
CF 4 S	4.0000	1.5000	2.250	3.500	.750	.187	1 1/2-12	1.500	3/4	3,000	30,000	73,100	28,500	1,300	2.62	7.440

W: Socket head wrench size

MA: Max clamping torque

C: Dynamic capacity

Co: Static capacity

Cp: Fatigue limit load

NDG: Limit speed